

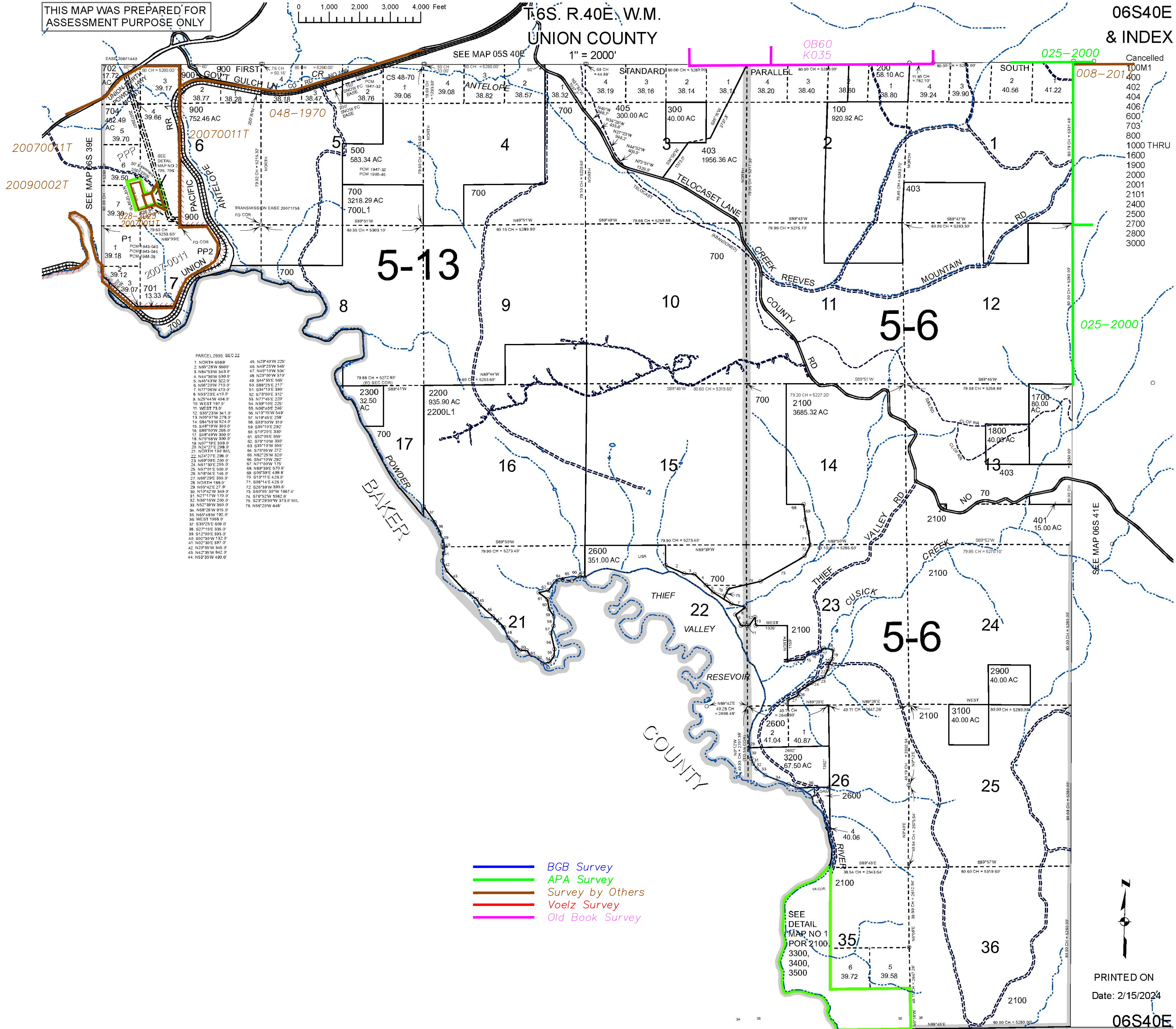
THIS MAP WAS PREPARED FOR ASSESSMENT PURPOSE ONLY

0 1,000 2,000 3,000 4,000 Feet

T.6S. R.40E. W.M.
UNION COUNTY

1" = 2000'

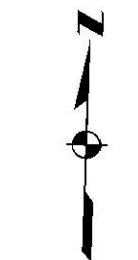
06S40E
& INDEX



PARCEL 2600, SEC 22

1. NORTH 65.80'	45. N29°49'W 225'
2. N80°20'W 66.00'	46. N82°25'W 54.5'
3. N84°15'W 64.3'	47. N45°10'W 50.4'
4. N44°30'W 53.0'	48. N20°30'W 37.0'
5. N40°43'W 52.2'	49. S84°18'E 69.0'
6. N56°20'W 71.0'	50. S88°25'E 21.7'
7. N7°06'W 47.0'	51. S34°10'E 39.0'
8. N53°23'E 41.0'	52. S73°09'E 31.2'
9. N23°44'W 48.4'	53. N77°45'E 22.0'
10. WEST 197.0'	54. N39°19'E 22.5'
11. WEST 73.0'	55. N89°40'E 24.8'
12. S33°23'W 34.1'	56. N1°15'W 54.9'
13. N89°07'W 27.8'	57. N19°45'E 25.8'
14. S84°15'W 52.4'	58. S00°00'W 31.0'
15. S48°19'W 30.0'	59. S35°10'E 29.2'
16. S90°00'W 30.0'	60. S1°23'E 33.9'
17. S48°19'W 30.0'	61. S50°05'E 33.0'
18. N7°06'W 30.0'	62. S70°10'W 33.0'
19. N57°19'E 30.0'	63. S35°10'W 33.0'
20. N24°27'E 29.8'	64. S70°05'W 27.2'
21. NORTH 137.0' ML	65. N82°25'W 32.0'
22. N24°27'E 29.8'	66. S54°10'W 29.2'
23. N69°09'E 28.0'	67. N82°25'W 32.0'
24. N61°30'E 25.5'	68. N89°39'E 37.0'
25. N5°01'E 54.0'	69. S00°39'E 43.9'
26. N10°04'E 14.8'	70. S1°11'E 42.5'
27. N60°29'E 35.0'	71. S09°14'E 42.5'
28. NORTH 195.0'	72. S26°30'W 89.5'
29. N01°42'E 27.0'	73. S60°05'30"W 166.74'
30. N10°42'W 34.0'	74. S76°32'W 194.2'
31. N25°17'E 17.0'	75. S23°29'30"W 373.0' ML
32. N38°16'W 20.0'	76. N66°20'W 44.8'
33. N52°19'W 36.0'	
34. N68°26'W 91.0'	
35. N69°48'W 192.0'	
36. WEST 106.0'	
37. S39°25'E 60.0'	
38. S27°18'E 33.0'	
39. S12°00'E 39.3'	
40. S02°30'W 132.0'	
41. N02°30'E 39.0'	
42. N20°55'W 34.0'	
43. N42°30'W 84.2'	
44. N53°35'W 49.0'	

- BGB Survey
- APA Survey
- Survey by Others
- Voelz Survey
- Old Book Survey



PRINTED ON
Date: 2/15/2024

06S40E

Cancelled
100M1
400
402
404
406
600
700
800
1000 THRU
1600
1900
2000
2001
2101
2400
2500
2700
2800
3000

SEE
DETAIL
MAP NO 1
POR 2100
3300,
3400,
3500