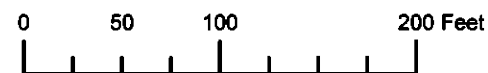


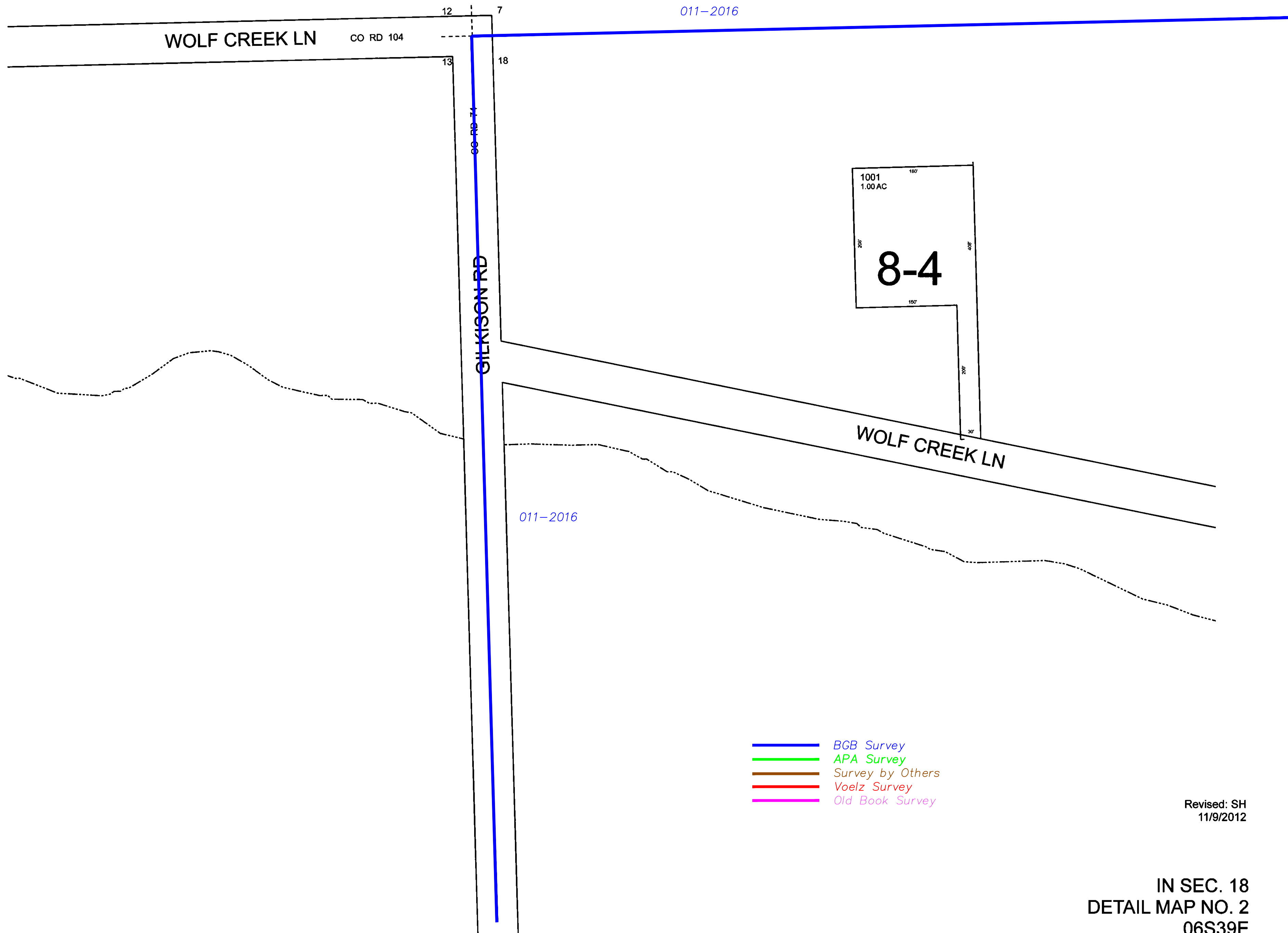
THIS MAP WAS PREPARED FOR
ASSESSMENT PURPOSE ONLY



DETAIL MAP NO. 2
T.6S. R.39E. W.M.
UNION COUNTY
1" = 100'

06S39E
DETAIL MAP NO. 2
IN SEC. 18

CANCELLED:



Revised: SH
11/9/2012

IN SEC. 18
DETAIL MAP NO. 2
06S39E