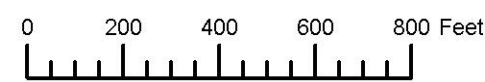
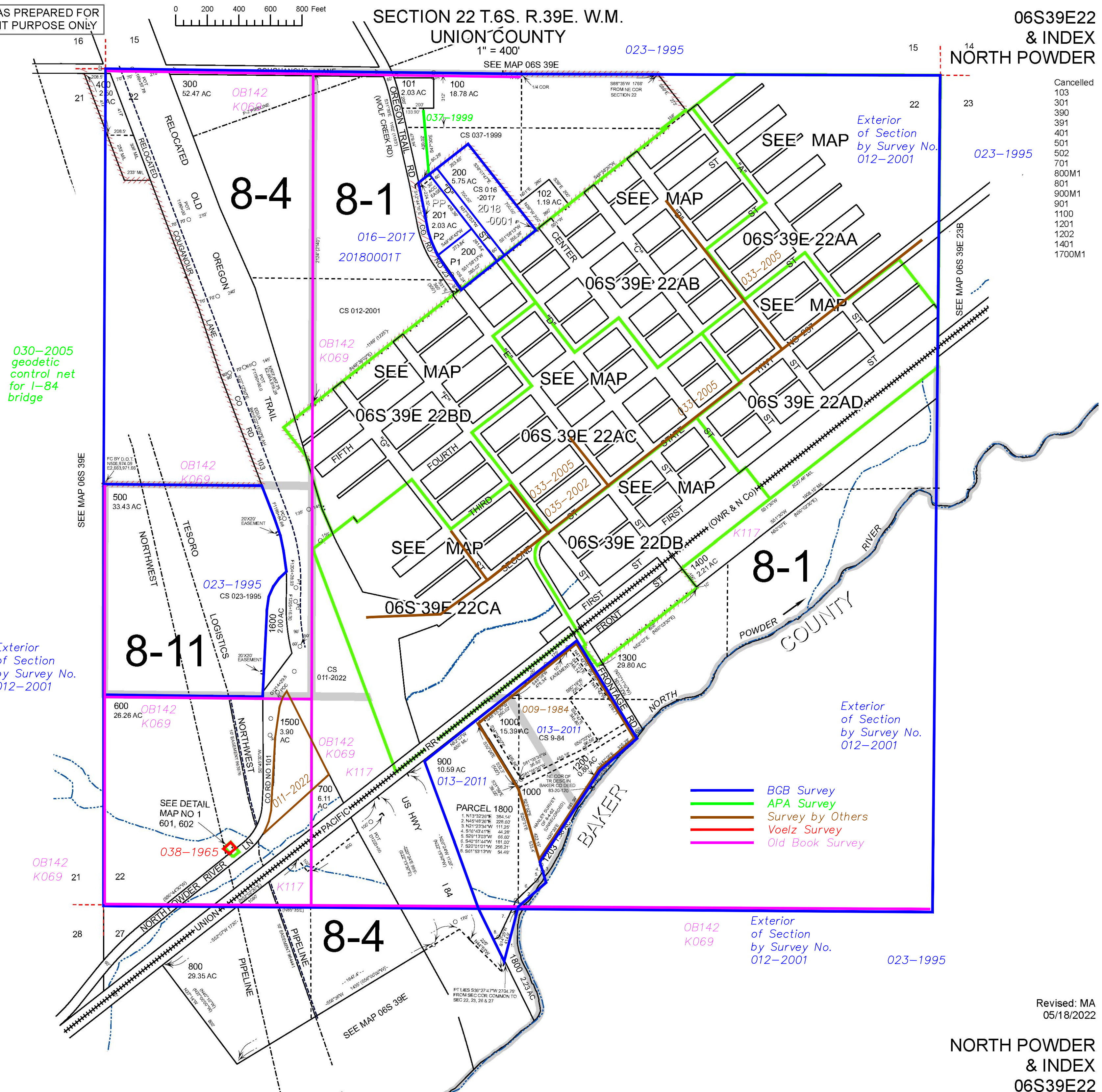


THIS MAP WAS PREPARED FOR ASSESSMENT PURPOSE ONLY



SECTION 22 T.6S. R.39E. W.M.
UNION COUNTY
1" = 400'

06S39E22
& INDEX
NORTH POWDER



- Cancelled
- 103
- 301
- 390
- 391
- 401
- 501
- 502
- 701
- 800M1
- 801
- 900M1
- 901
- 1100
- 1201
- 1202
- 1401
- 1700M1

030-2005
geodetic
control net
for I-84
bridge

Exterior
of Section
by Survey No.
012-2001

Exterior
of Section
by Survey No.
012-2001

- BGB Survey
- APA Survey
- Survey by Others
- Voelz Survey
- Old Book Survey

Exterior
of Section
by Survey No.
012-2001

Revised: MA
05/18/2022

NORTH POWDER
& INDEX
06S39E22