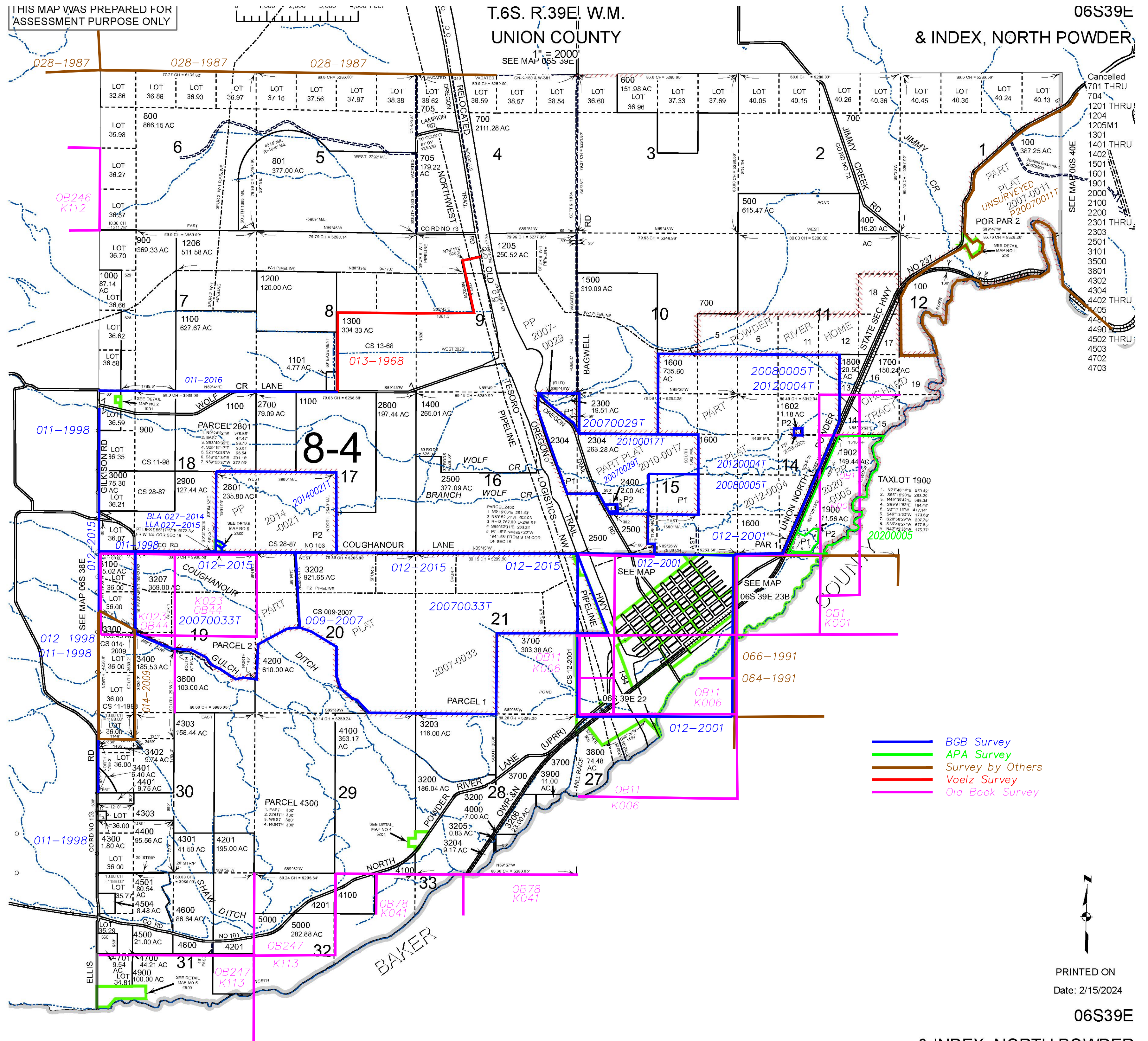


THIS MAP WAS PREPARED FOR ASSESSMENT PURPOSE ONLY

T.6S. R.39E1. W.M.
UNION COUNTY

06S39E
& INDEX, NORTH POWDER



Cancelled
701 THRU
704
1201 THRU
1204
1205M1
1301
1401 THRU
1402
1501
1601
1901
2000
2100
2200
2301 THRU
2303
2501
3101
3500
3801
4302
4304
4400
4402 THRU
4405
4400
4490
4502 THRU
4503
4702
4703

PRINTED ON
Date: 2/15/2024

06S39E
& INDEX, NORTH POWDER