

THIS MAP WAS PREPARED FOR ASSESSMENT PURPOSE ONLY

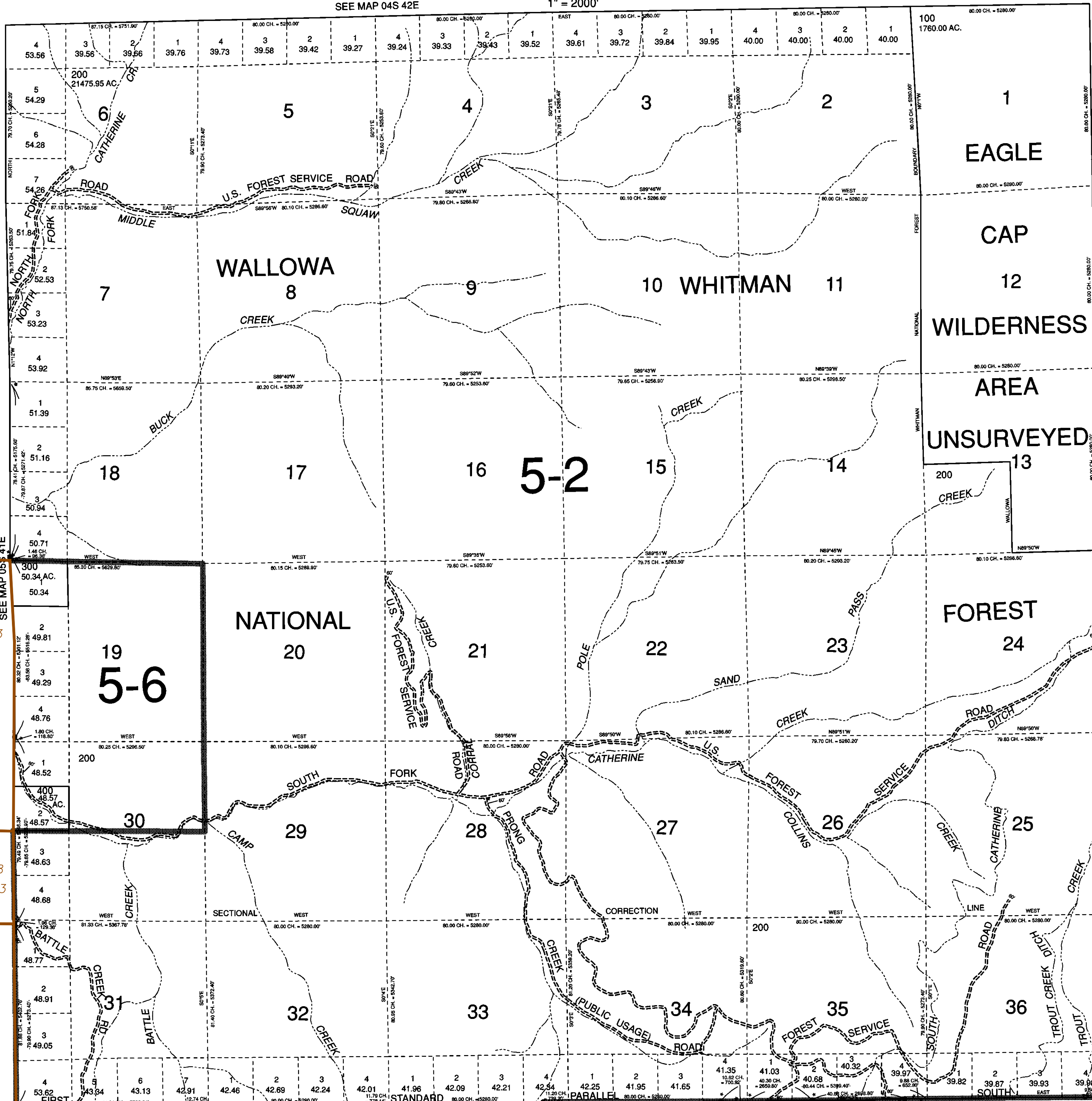
0 1,000 2,000 4,000 Feet

T.05S. R.42E. W.M. UNION COUNTY

05S 42E

SEE MAP 04S 42E

1" = 2000'



008-2013

032-1998
008-2013

008-2013

042-2003

- BGB Survey
- APA Survey
- Survey by Others
- Voelz Survey
- Old Book Survey

SEE MAP 06S 42E

BAKER

COUNTY