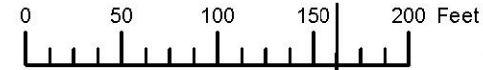


THIS MAP WAS PREPARED FOR ASSESSMENT PURPOSE ONLY



S.E. 1/4 N.E. 1/4 SEC. 7 T.3S. R.38E. W.M.

UNION COUNTY

1" = 100'

03S38E07AD
LA GRANDE

Cancelled
1401
1600
3700
3900
4800
5790



CS 006-2021
1/16 COR
006-2021

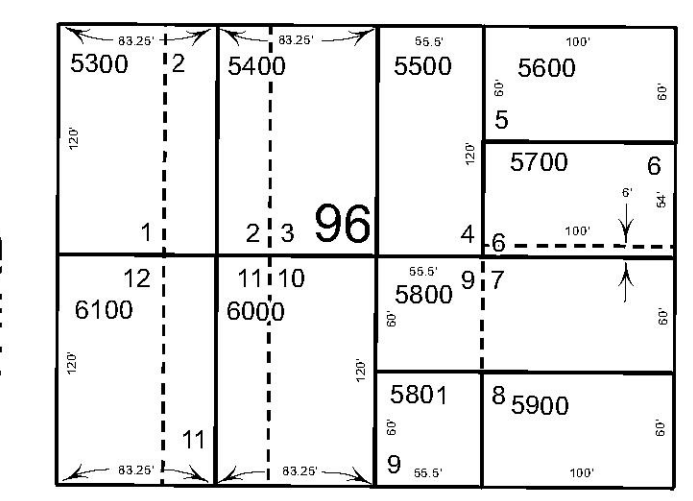
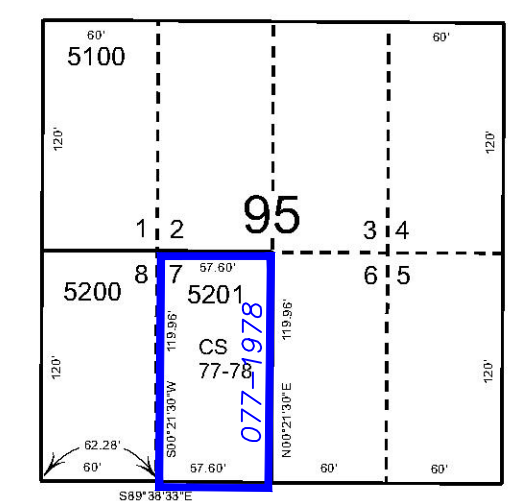
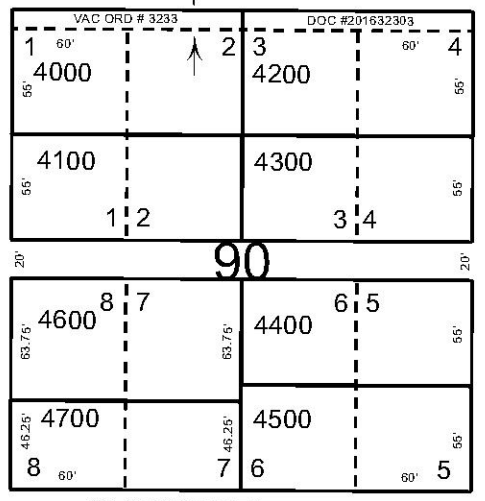
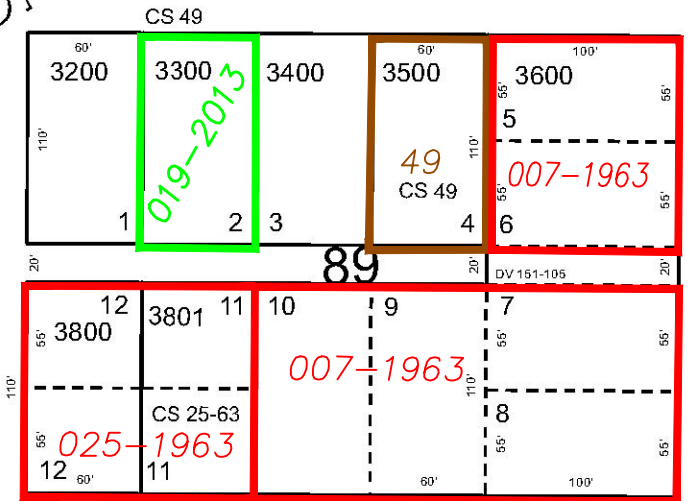
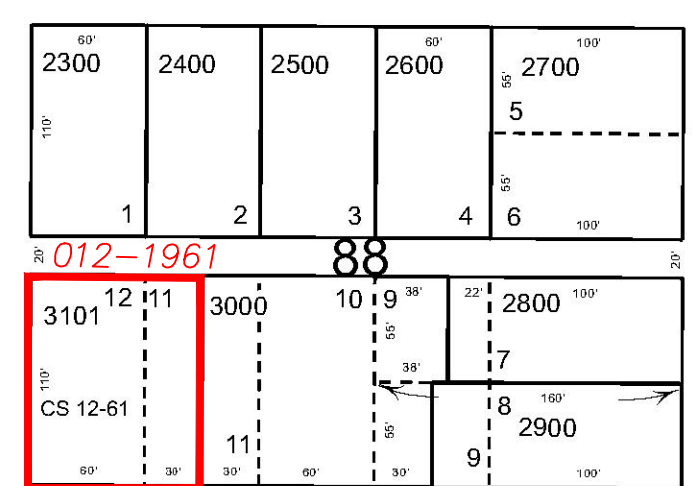
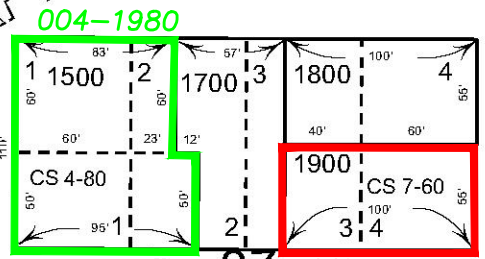
008-2012

1/16 COR
028-2005

008-2012

008-2012

028-2005



Subdivisions on This Page
CHAPLIN'S ADDITION

- BGB Survey
- APA Survey
- Survey by Others
- Voelz Survey
- Old Book Survey

PRINTED ON
Date: 1/30/2024

03S38E07AD