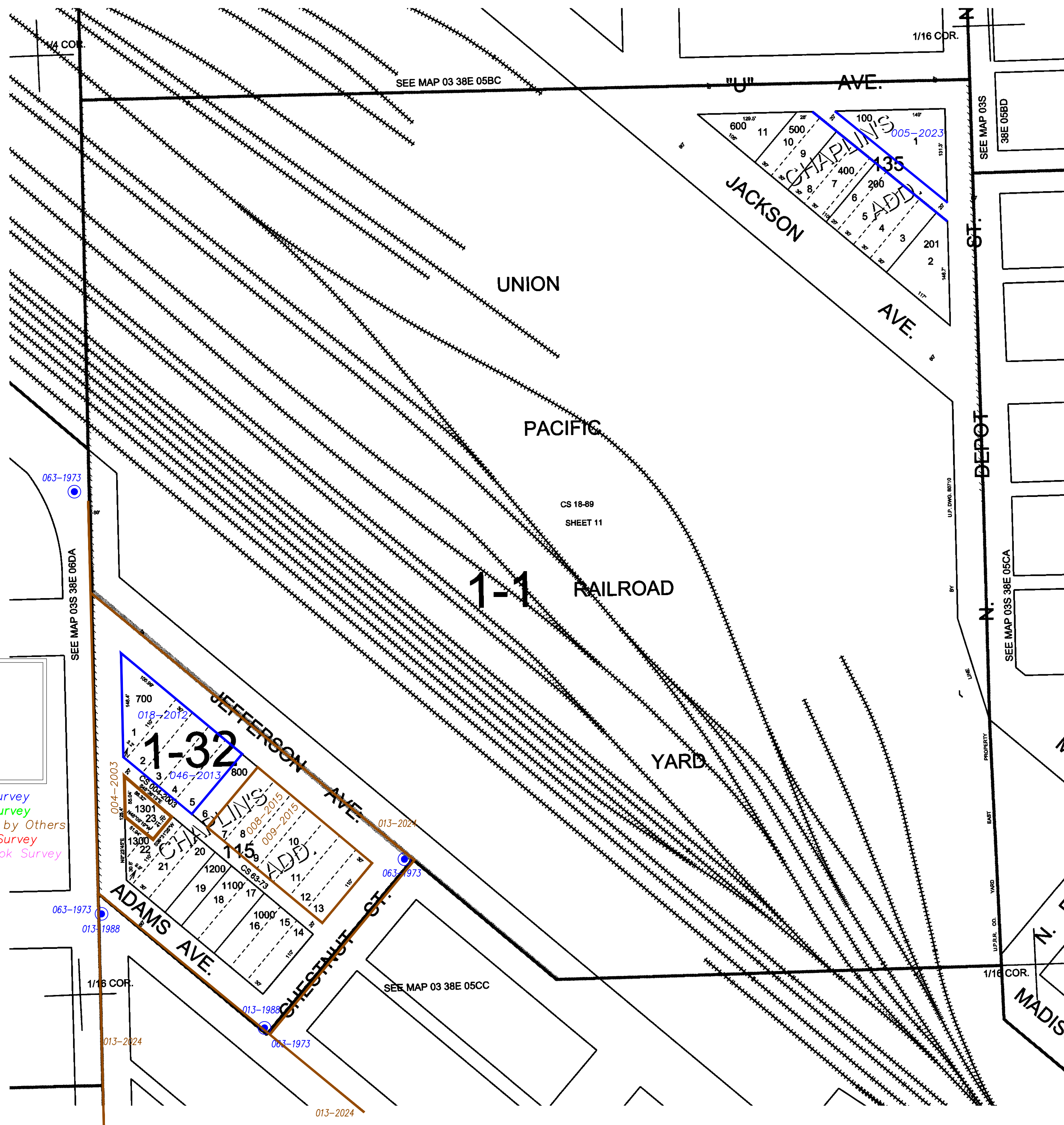
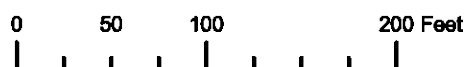


NW1/4 SW1/4 SECTION 05 T.03S. R.38E. W.M.
UNION COUNTY

03S 38E 05CB
CANCELLED NO.
300
900

THIS MAP WAS PREPARED FOR
ASSESSMENT PURPOSE ONLY

1" = 100'



Subdivisions on
this page
CHAPLIN'S ADDITION

- BGB Survey
- APA Survey
- Survey by Others
- Voelz Survey
- Old Book Survey

Revised 9C
5/15/2006

03S 38E 05CB