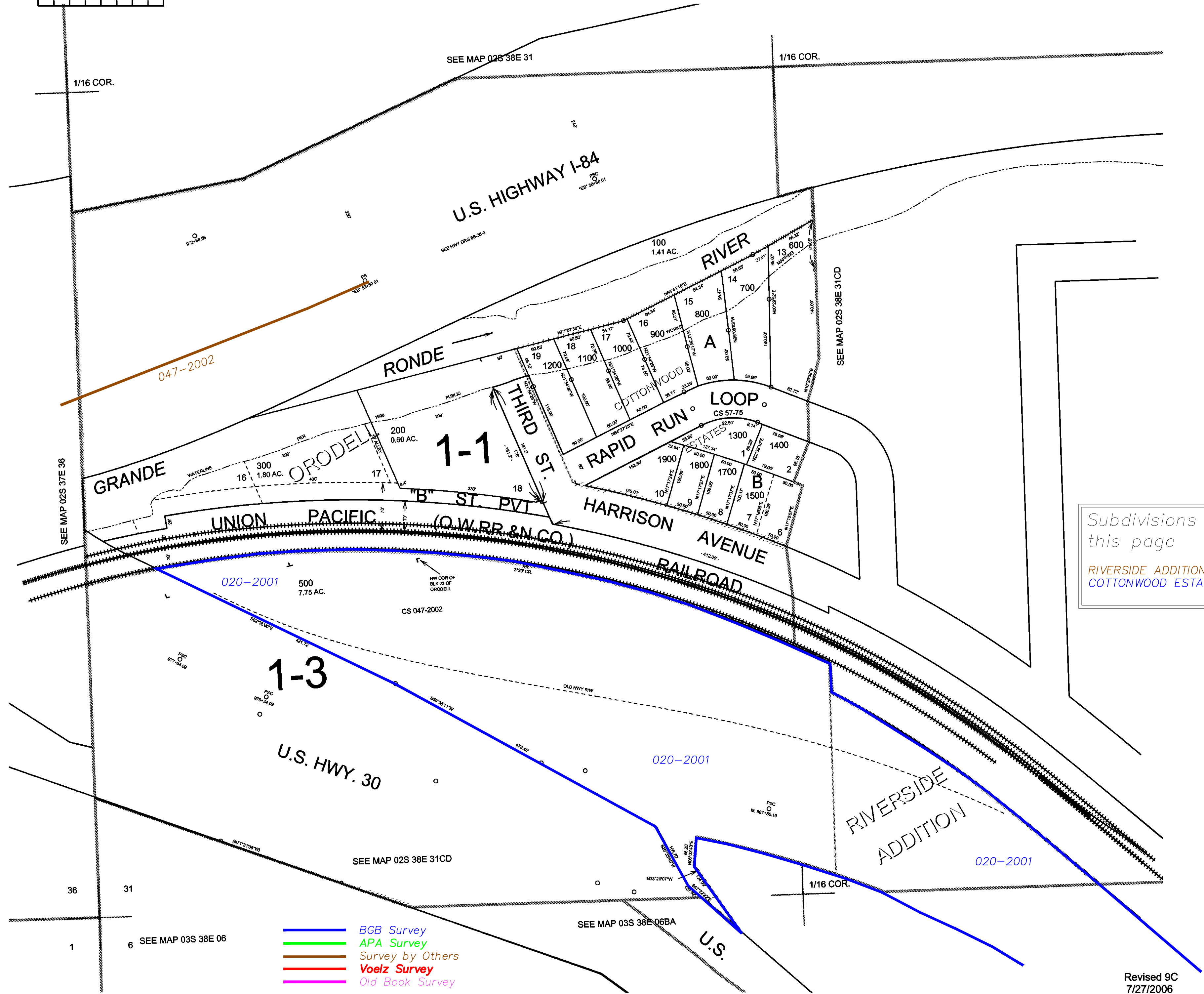
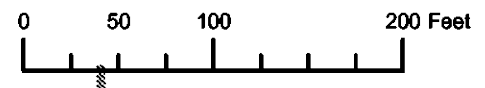


THIS MAP WAS PREPARED FOR ASSESSMENT PURPOSE ONLY

SW1/4 SW1/4 SECTION 31 T.02S. R.38E. W.M. UNION COUNTY
1" = 100'

02S 38E 31CC
CANCELLED NO.
301
302
400
1800



Subdivisions on this page
RIVERSIDE ADDITION
COTTONWOOD ESTATES

- BGB Survey
- APA Survey
- Survey by Others
- Voelz Survey
- Old Book Survey

Revised 9C
7/27/2006

02S 38E 31CC