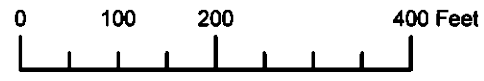


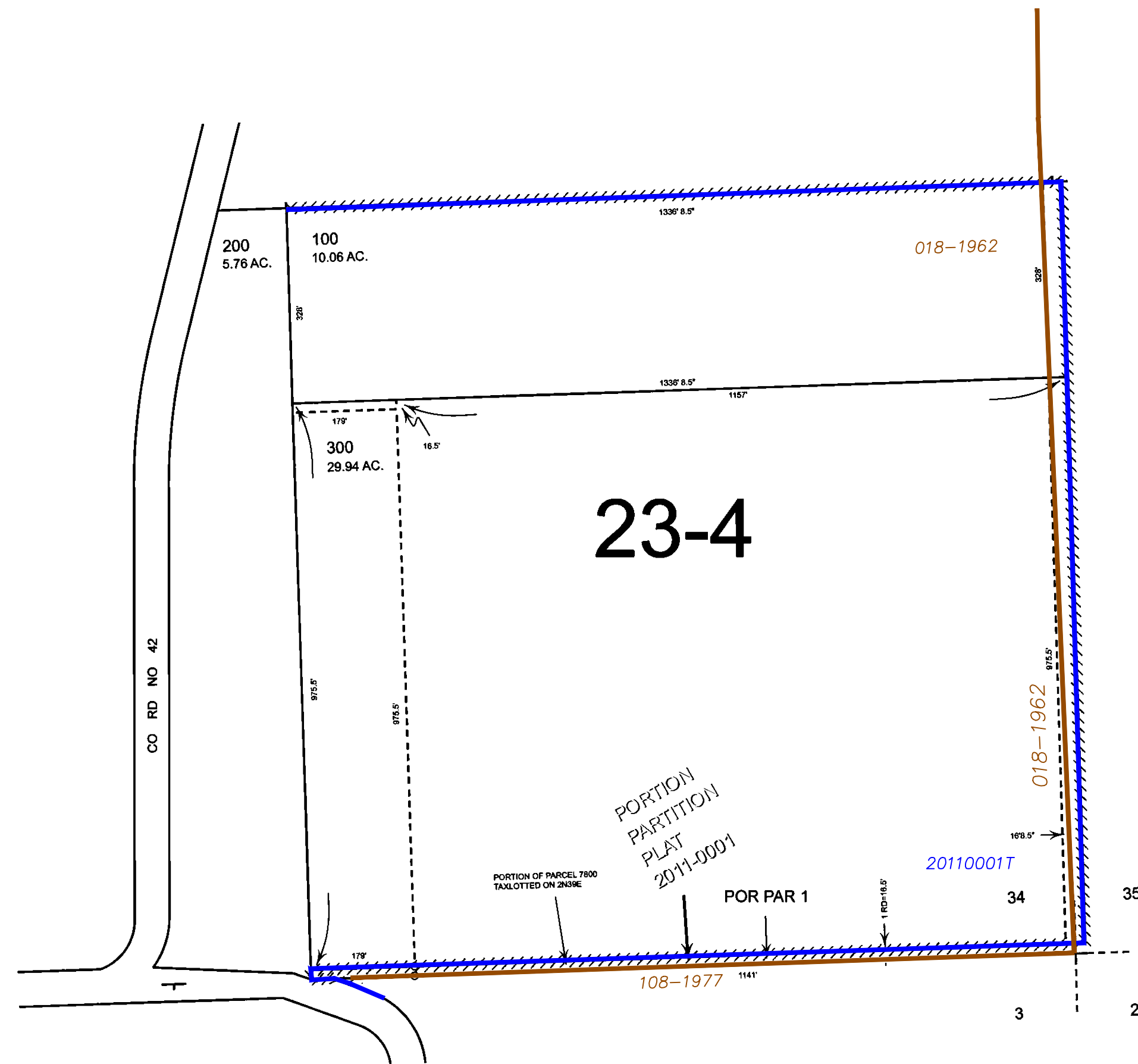
THIS MAP WAS PREPARED FOR
ASSESSMENT PURPOSE ONLY



S.E. 1/4 SEC. 34 T.2N. R.39E. W.M.
UNION COUNTY
1" = 200'

02N39E34D

CANCELLED:



- BGB Survey
- APA Survey
- Survey by Others
- Voelz Survey
- Old Book Survey

Revised: SH
7/18/2011

02N39E34D