

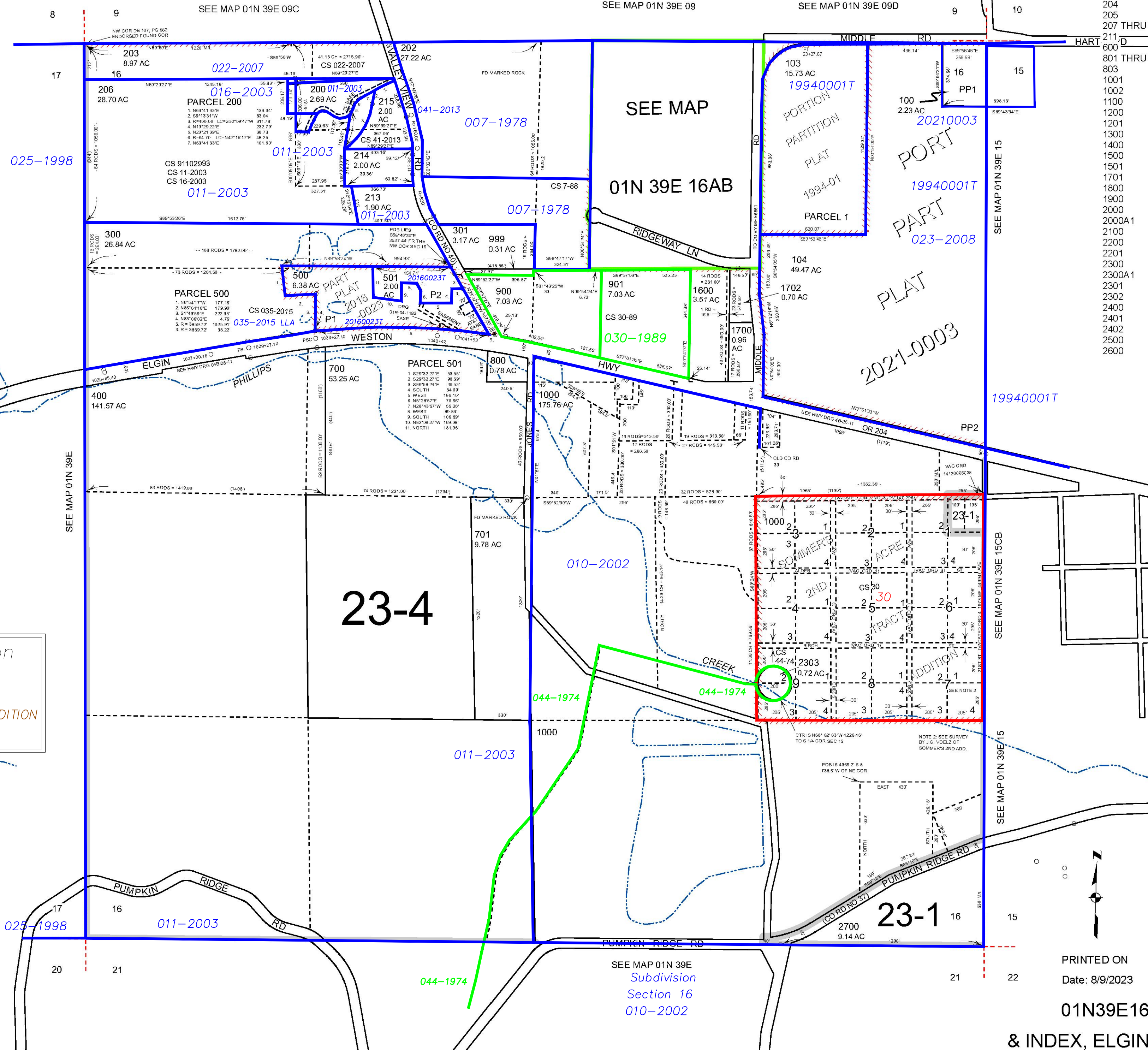
THIS MAP WAS PREPARED FOR ASSESSMENT PURPOSE ONLY



SECTION 16 T.1N. R.39E. W.M.  
UNION COUNTY  
1" = 400'

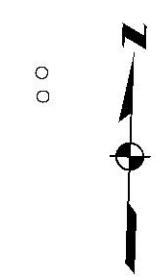
01N39E16  
& INDEX, ELGIN

- Cancelled
- 101
- 102
- 201
- 204
- 205
- 207 THRU
- 211
- 600
- 801 THRU
- 803
- 1001
- 1002
- 1100
- 1200
- 1201
- 1300
- 1400
- 1500
- 1701
- 1800
- 1900
- 2000
- 2000A1
- 2100
- 2200
- 2201
- 2300
- 2300A1
- 2301
- 2302
- 2400
- 2401
- 2402
- 2500
- 2600



Subdivisions on this page  
**SOMMER'S SECOND ADDITION**

- BGB Survey
- APA Survey
- Survey by Others
- Voelz Survey
- Old Book Survey



PRINTED ON  
Date: 8/9/2023

01N39E16  
& INDEX, ELGIN

SEE MAP 01N 39E  
Subdivision  
Section 16  
010-2002