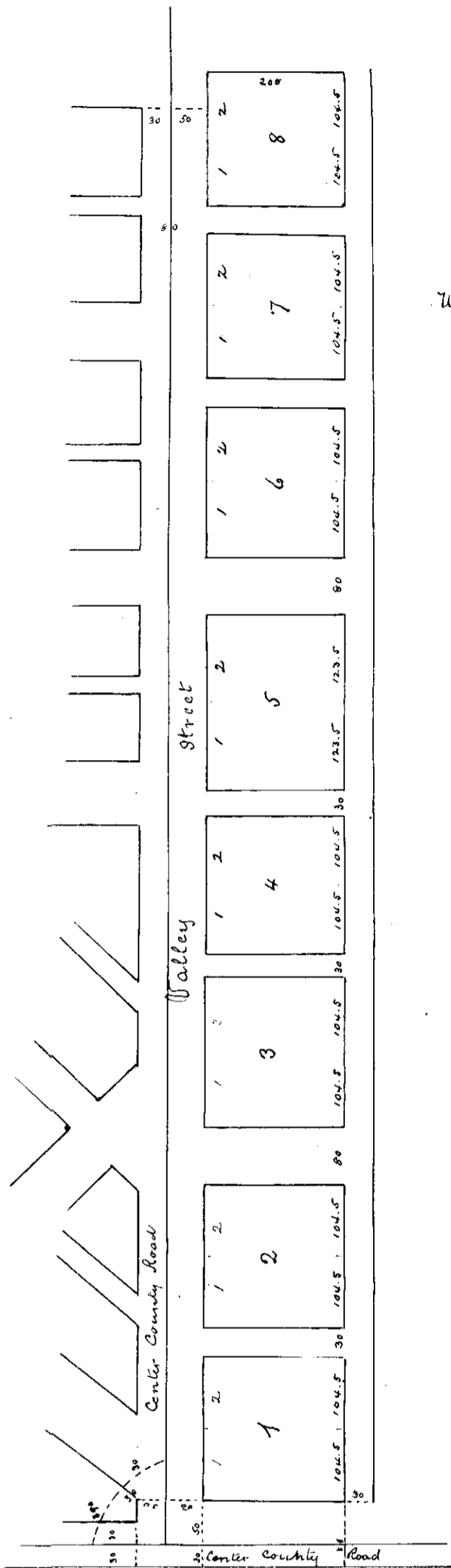


18860003



# WILLIAMSON'S ADDITION,

to the City of  
*La Grande,*  
 Union County, Oregon.  
 1886.

Part of N. 1/4 of S. E. 1/4. S. 5. T. 3. S. R. 38. E. W. No.

Scale 200' to 1 inch.

All Streets 80 feet wide.

All alleys 30 feet wide.

J. H. Romig, Surveyor.  
 E. R. Thornton, Del.

Recorded, July 6, 1886.

B. F. Wilson, Co. Clerk.

*Handwritten notes:*  
 The plat for the Williamson's Addition  
 was filed for record in the  
 office of the County Clerk,  
 on July 6, 1886.