

HARRISON'S ADDITION OF BLOCK 50 OF RIVERSIDE ADDITION SHEET 1 OF 2

BASIS OF BEARING

FORWARD BEARING AS PUBLISHED BY THE U.S.C.
AND G.S. FROM Δ COLLEGE TO Δ VALLEY

LEGEND

- FOUND MONUMENT OF RECORD.
- SET 5/8" x 30" IRON PIN WITH PLASTIC CAP MARKED B-G-A SURVEY MARKER.
- ⊙ SET 2" x 36" IRON PIPE WITH BRASS CAP AT INITIAL POINT MARKED HARRISON'S SUBDIVISION, INITIAL + POINT.

SURVEYORS CERTIFICATE

I GREGORY T. BLACKMAN, SURVEYOR, BEING DULY SWORN, DEPOSE AND SAY THAT I HAVE SURVEYED, SUBDIVIDED AND PLATTED HARRISON'S ADDITION, BEING A PORTION OF BLOCK 50 OF RIVERSIDE ADDITION TO LA GRANDE, MORE PARTICULARLY DESCRIBED AS FOLLOWS:

BEGINNING AT A 2" x 36" IRON PIPE WITH BRASS CAP MARKED "HARRISON'S ADDITION + INITIAL POINT," SAID PIPE BEING 371.22 FT. SOUTH AND 81.42 FT. WEST OF THE NORTH 1/4 CORNER OF SECTION 6, TOWNSHIP 3 S. RANGE 38 E. OF WILLAMETTE MERIDIAN.

- THENCE ; S 00° 25' 00" E; 32.37 FEET.
- THENCE ; S 48° 22' 46" E; 229.00 FEET.
- THENCE ; N 00° 27' 15" W; 98.56 FEET.
- THENCE ; N 89° 38' 06" E; 57.92 FEET.
- THENCE ; N 00° 27' 15" W; 7.00 FEET.
- THENCE ; N 89° 38' 06" E; 5.00 FEET.
- THENCE ; N 00° 27' 15" W; 80.00 FEET.

THENCE ; S 89° 38' 06" W; 232.88 FEET TO THE POINT OF BEGINNING; SAID PARCEL CONTAINING 0.5501 ACRES; AND THAT I MADE SUCH SURVEY AND PLAT BY ORDER OF AND UNDER THE DIRECTION OF THE OWNERS THEREOF; THAT ALL LOT CORNERS ARE AND BOUNDARY CORNERS ARE MARKED WITH MONUMENTS AS INDICATED ON THE AMENDED PLAT IN ACCORDANCE WITH O.R.S. 92.050, AND THAT THE SIZE OF ALL LOTS ARE AS SHOWN ON THE PLAT.

REGISTERED
PROFESSIONAL
LAND SURVEYOR

Gregory T. Blackman
OREGON
JULY 13, 1975
GREGORY T. BLACKMAN
891

BAGETT-GRIFFITH AND ASSOCIATES

Gregory T. Blackman

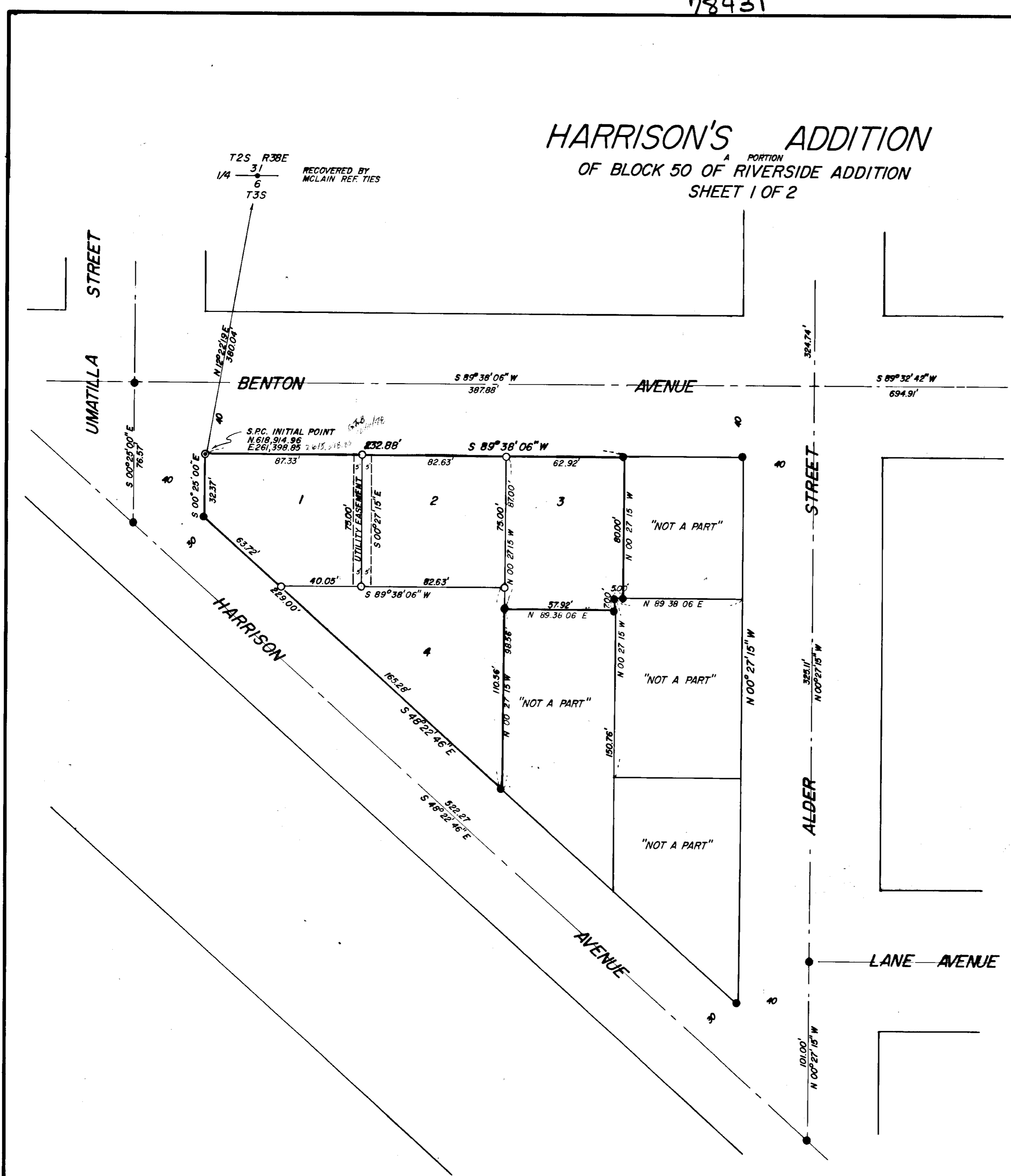
PARTNER PLS 64-4

SUBSCRIBED AND SWORN TO BEFORE ME THIS 21 DAY OF June, 1978.

December 2, 1980

MY COMMISSION EXPIRES

Mary Lou Dean
NOTARY PUBLIC OF OREGON
NOTARY PUBLIC - OREGON
My Commission Expires



HARRISON'S ADDITION
OF BLOCK 50 OF RIVERSIDE ADDITION
SHEET 2 OF 2

DEDICATION

STATE OF OREGON
SS
COUNTY OF UNION

WE, DEAN M. HARRISON AND JOANNE M. HARRISON, HUSBAND AND WIFE; BEING DULY SWORN, DEPOSE AND SAY THAT WE ARE THE OWNERS OF HARRISON'S ADDITION, MORE PARTICULARLY DESCRIBED IN THE ANNEXED SURVEYOR'S CERTIFICATE; THAT WE DID CAUSE THE SAME TO BE SURVEYED AND PLATTED AS SHOWN ON THE ANNEXED MAP.

Dean M. Harrison
Joanne M. Harrison

SUBSCRIBED AND SWORN TO BEFORE ME THIS 21 DAY OF June, 1978.

December 2, 1980
MY COMMISSION EXPIRES

Mary Lou Dean
NOTARY PUBLIC - OREGON
My Commission Expires _____

APPROVALS

CITY OF LAGRANDE ENGINEER

Wm A. Hamilton
EXAMINED AND RECOMMENDED FOR APPROVAL BY THE UNION COUNTY COURT THIS
23 DAY OF June, 1978.

CITY OF LAGRANDE PLANNING COMMISSION

APPROVED THIS 6 DAY OF July, 1978.
John James

UNION COUNTY COURT

APPROVED THIS 17 DAY OF July, 1978.
David Schuck
Ralph Robinson

UNION COUNTY ASSESSOR

I HEREBY CERTIFY THAT PURSUANT TO ORS 92.095, ALL AD VALLOREM TAXES AND ALL SPECIAL ASSESSMENTS, FEES AND OTHER CHARGES REQUIRED BY LAW TO BE PLACED ON THE ~~1978~~ TAX ROLL WHICH BECAME A LEIN ON THIS SUBDIVISION OR WILL BECOME A LEIN DURING THIS CALENDER YEAR BUT NOT YET CERTIFIED TO THE TAX COLLECTOR FOR COLLECTION, HAVE BEEN PAID TO ME.

DATE July 7, 1978 ASSESSOR Roy L. Long

UNION COUNTY TREASURER Barbara Dean July 7-1978

I HEREBY CERTIFY THAT ALL AD VOREM TAXES AND ALL SPECIAL ASSESSMENTS, FEES AND OTHER CHARGES REQUIRED BY LAW TO BE PLACED UPON THE TAX ROLL WHICH HAVE BECOME A LEIN ON THIS SUBDIVISION AND THAT NOW ARE DUE AND PAYABLE HAVE BEEN PAID.

FILING STATEMENT

UNION COUNTY CLERK

78431

FILED FOR RECORD THIS 14 DAY OF July, 1978, AT 2:00 O'CLOCK P.M., ON PAGE 84 IN BOOK 3 OF PLATS OF UNION COUNTY.

Shirley E. Bault
UNION COUNTY CLERK
BY maiden miles

REGISTERED PROFESSIONAL LAND SURVEYOR
Gregory T. Blackman
OREGON
JULY 13, 1978
GREGORY T. BLACKMAN
991