

GRANDE RONDE ORCHARD TRACTS

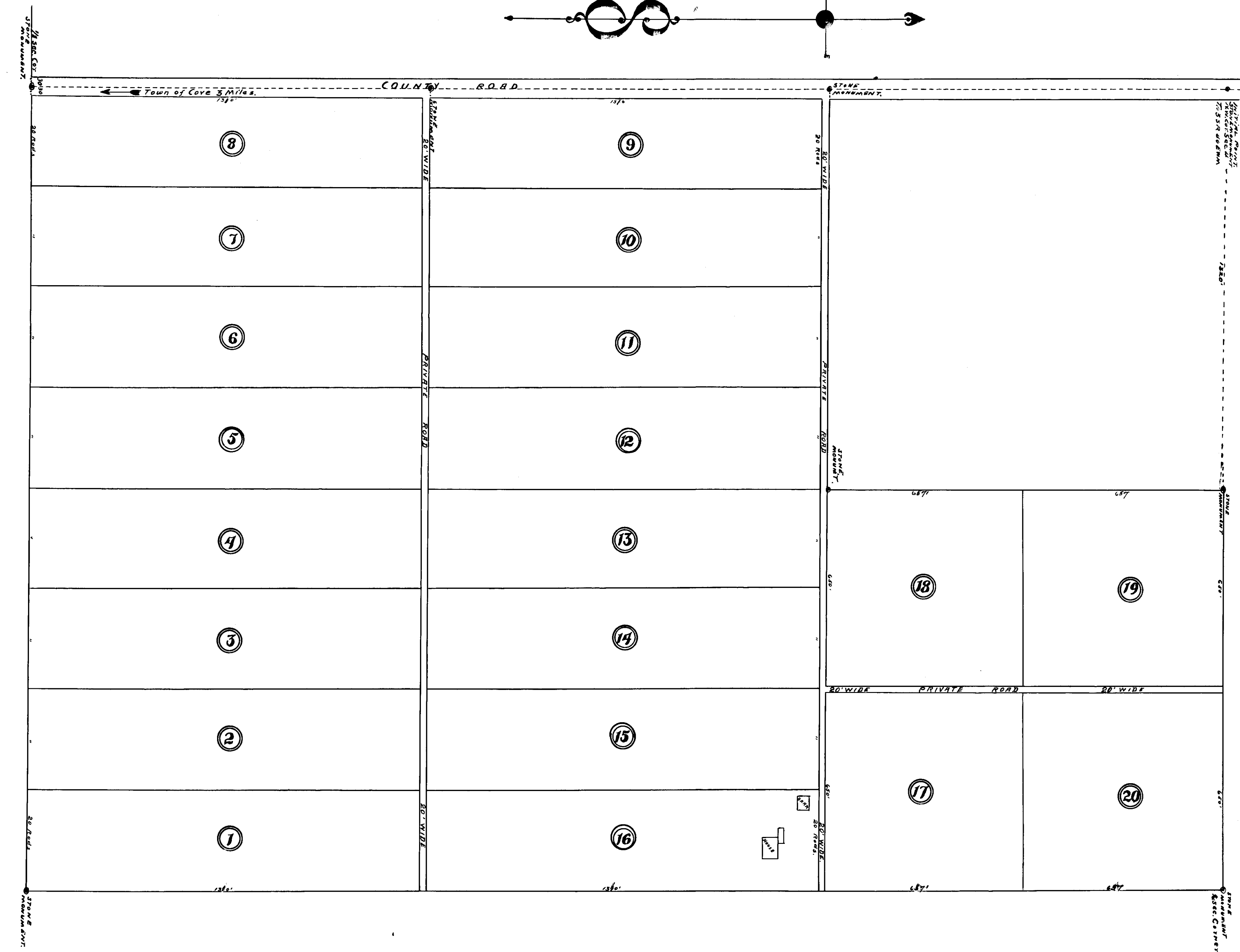
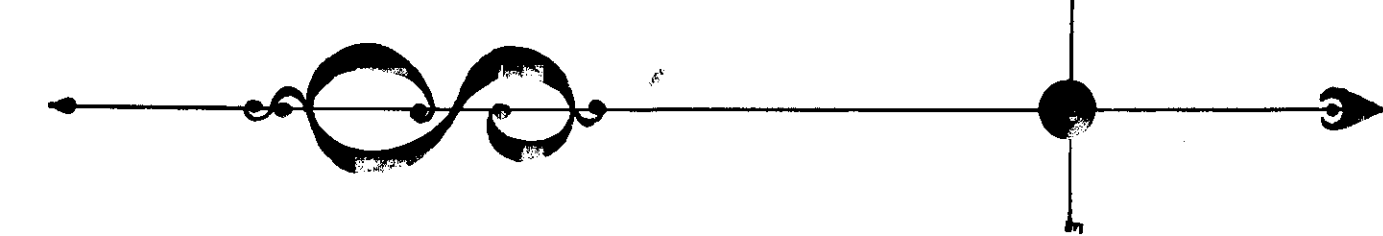
NEAR COVE, UNION COUNTY, ORE.

OWNED BY

GRANDE RONDE ORCHARD CO.

Being The
N. 1/2 of S.W. 1/4, THE S. 1/2 of NW 1/4, AND NE 1/4 of NW 1/4, SECTION 4, T. 3. S. R. 40, E. W. M.
Containing 200 Acres. Each Tract Containing 10 Acres Less Roadways.

scale 200' to 1" inch



State of Oregon) ss. I, Arthur Curtis, County Surveyor of Union
County, Oregon, do hereby certify that the foregoing map of
Grande Ronde Orchard Tracts is true and correct and
corresponds with the measurements on the ground.
Arthur Curtis
County Surveyor

State of Oregon) ss. I, R. R. Rinehart, County Assessor of Union
County, Oregon, do hereby certify that there are no taxes
due and unpaid upon the lands embraced in the
foregoing plat, and that said plat is in compliance
with law.
R. R. Rinehart
County Assessor

Approved this 20th day of Feb. 1910
J. C. Kery, County Judge
G. M. Smith, Commissioner
H. A. Halloway, Commissioner

Filed May 17-1910 - J. R. Moore