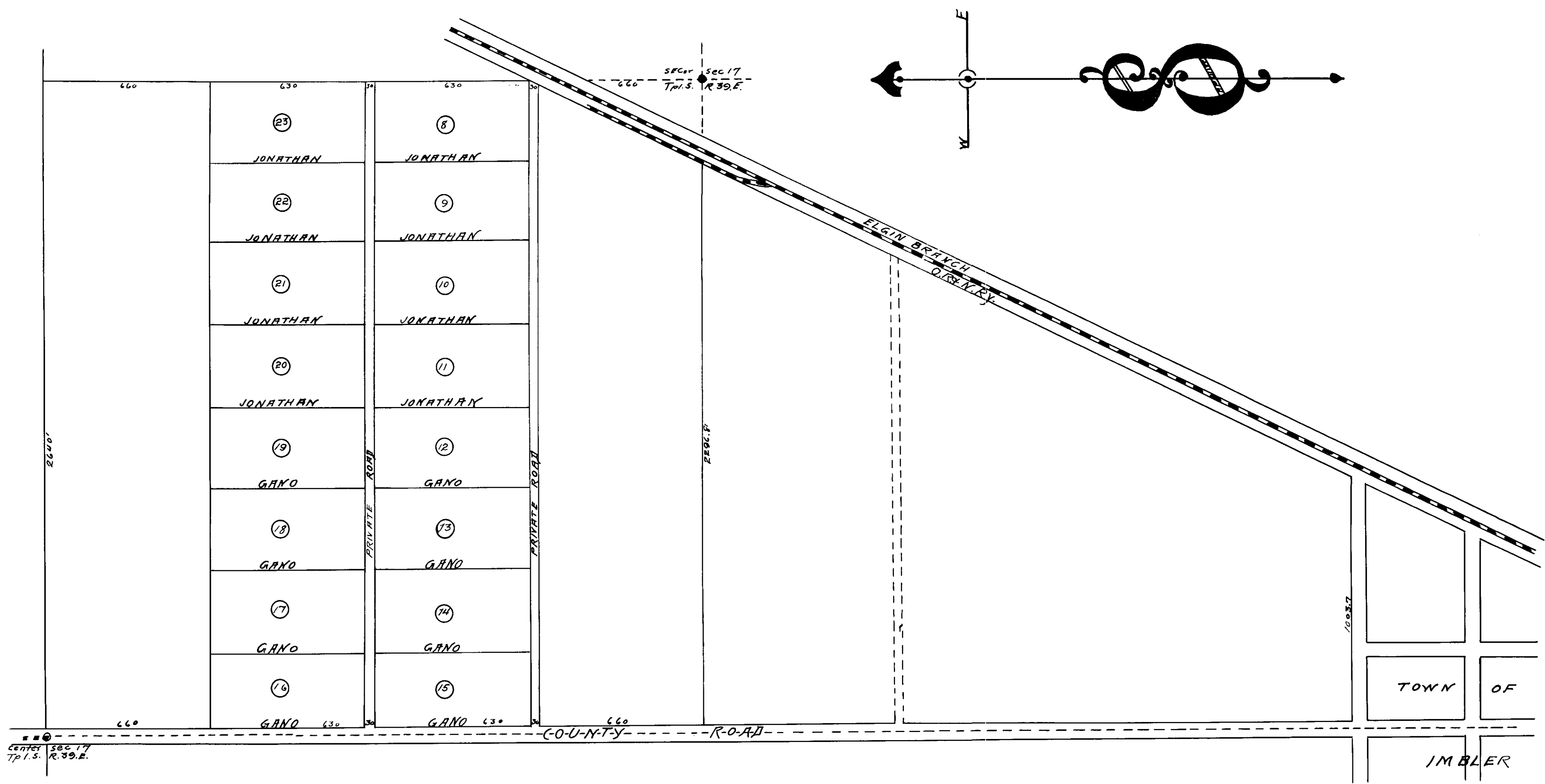


BRIDGES & CLEAVER ORCHARD TRACTS IMBLER, OREGON.

FIVE ACRE TRACTS, PLANTED TO GANO AND JONATHAN



STATE OF OREGON }
 COUNTY OF UNION, } ss.
 I, Arthur Curtis, County Surveyor of Union County, Oregon,
 do hereby certify that the foregoing plat is true and correct and con-
 forms to the actual measurements on the ground.
 Arthur Curtis
 County Surveyor

STATE OF OREGON }
 COUNTY OF UNION, } ss.
 I, T. A. Rinehart, County Assessor of
 Union County, Oregon, do hereby certify that the fore-
 going plat is in conformity to law and that there
 are no taxes due and unpaid upon the lands
 embraced therein.
 T. A. Rinehart
 County Assessor

Approved this 8th day of Dec. 1910
 J. B. Hickey
 County Judge
 J. W. Hickey
 Commissioner
 A. G. Hickey
 Commissioner

Filed for Record this 11th day of Dec. 1910.
 L. S. Swann
 County Recorder

Filed December 15th 1910.
 J. R. Swann
 Recorder