

BE IT REMEMBERED, that at a regular term of the Union County Board of Commissioners, for the County of Union, sitting for the transaction of County business, begun and held at the Joseph Building Annex in the City of La Grande, in said County and State, on Wednesday of said month and the time fixed by law for holding a regular term of said Court, when were present:

The Honorable COLLEEN MACLEOD Chairman
STEVE MCCLURE Commissioner
JOHN J. HOWARD Commissioner

WHEN, on ~~Wednesday~~ ^{Thursday} the 7th day of March, 2002, among others the following proceedings were had to-wit:

IN THE MATTER OF)
JAYBIRD DRIVE BEING) COURT ORDER
RENAMED ROCK RIDGE DRIVE) 2002-15

WHEREAS, Union County received an application on February 11, 2002, requesting Jaybird Drive be renamed Rock Ridge Drive;

WHEREAS, Union County Ordinance No. 1988-3 Section 1.200 requires the County Board of Commissioners to provide public hearing notice to adjoining landowners and in the newspaper;

WHEREAS, landowners adjacent to the affected roadway were mailed public hearing notice;

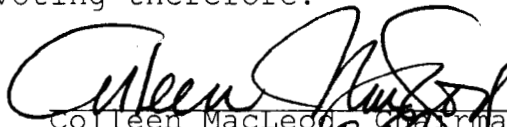
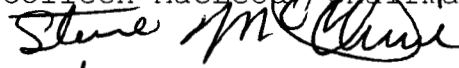
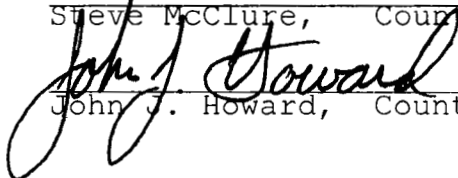
WHEREAS, The Observer newspaper published notice of the Board of Commissioners public hearing on February 21, 2002.

NOW THEREFORE, BE IT ORDAINED BY THE UNION COUNTY BOARD OF COMMISSIONERS, STATE OF OREGON:

SECTION 1: ROAD NAME ADOPTION

Jaybird Drive is changed to Rock Ridge Drive for the following road segment: A private roadway north of La Grande, west of Mt. Glen Road, beginning at a point on the north side of Mt. Glen Road in Twp. 2S, Range 38 EWM, NE ¼, NE ¼, NW ¼, NE ¼ of Section 32 and lying between property described as Twp. 2S, Range 38 EWM, Section 32, Tax Lots 300 and 302, extending less than one quarter mile in length.

PASSED AND ADOPTED this 7th day of March, 2002, by a vote of the following members of the Union County Board of Commissioners voting therefore.


Colleen MacLeod, Chairman

Steve McClure, County Commissioner

John J. Howard, County Commissioner

SEC. 32 T2S R38E W.M.
UNION COUNTY

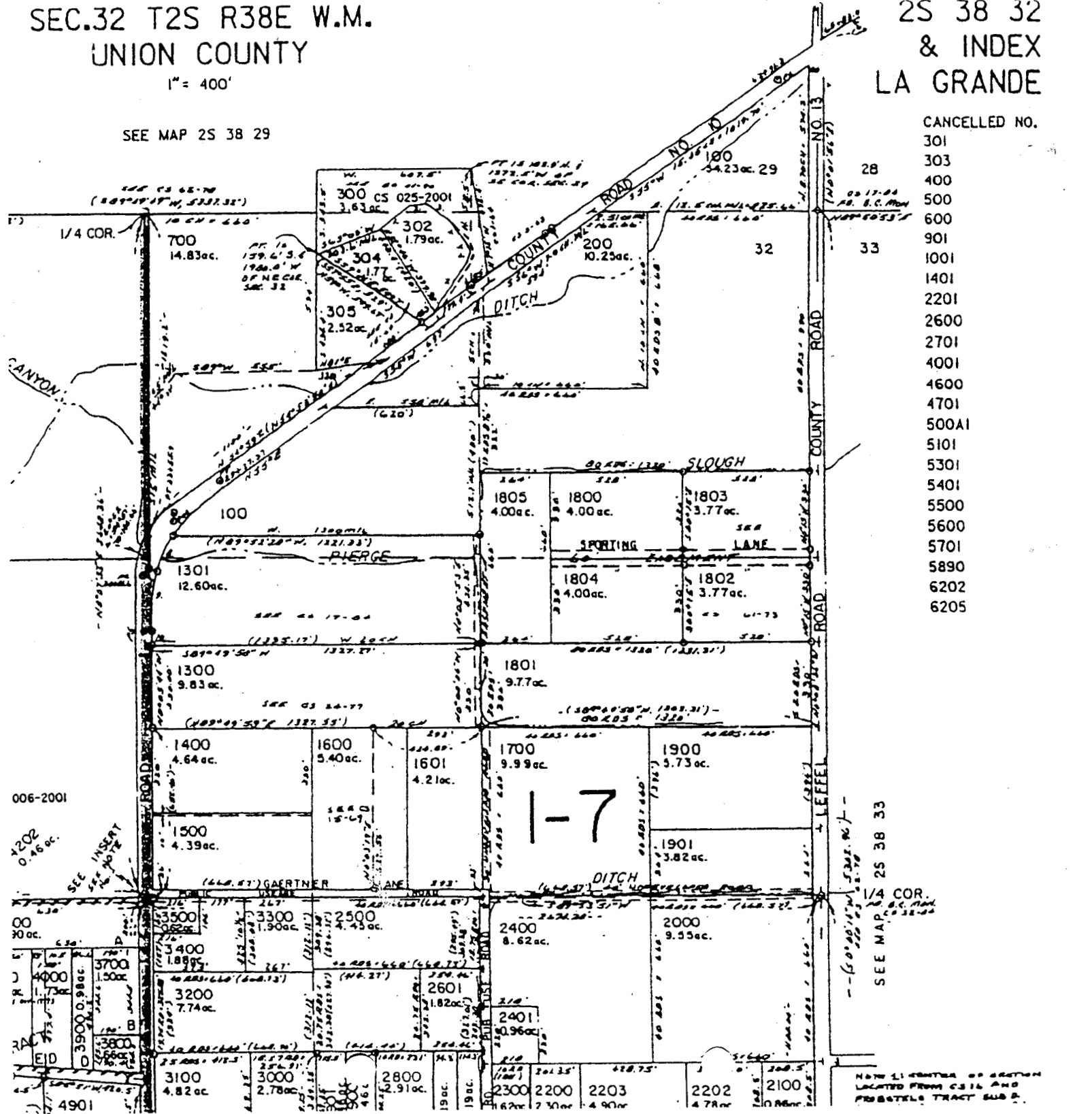
1" = 400'

SEE MAP 2S 38 29

2S 38 32
& INDEX
LA GRANDE

CANCELLED NO.

- 301
- 303
- 400
- 500
- 600
- 901
- 1001
- 1401
- 2201
- 2600
- 2701
- 4001
- 4600
- 4701
- 500A1
- 5101
- 5301
- 5401
- 5500
- 5600
- 5701
- 5890
- 6202
- 6205



SEE MAP 2S 38 33

NOTE: CENTER OF SECTION LOCATED FROM CS 16 AND PROBELE TRACT SUB D.